

We're looking for families with toddlers who have **hearing loss** in both ears to participate in our research study

Eligibility

Age

Child is less than 19 months old



Hearing

Child has hearing loss in both of their ears



Devices

Child uses a hearing device in both ears



Language

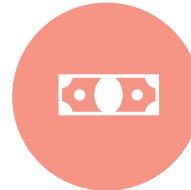
Primary care-giver understands spoken English



Incentives

Money

Up to \$1,075 for your family's time



In-Home

Potential in-home speech therapy for your child



Book

A child language development book



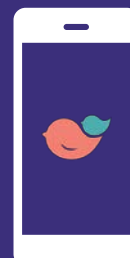
Reports

Speech & language reports about your child's development



About

The Early Intervention Research Group (EIRG) exists to enhance the early development of infants and toddlers. Our goal is to empower families to implement early intervention strategies through customized, evidence-based, family-centered practices.



Connect

Text 'info' to
847.750.3440

ei@northwestern.edu
847.491.3183